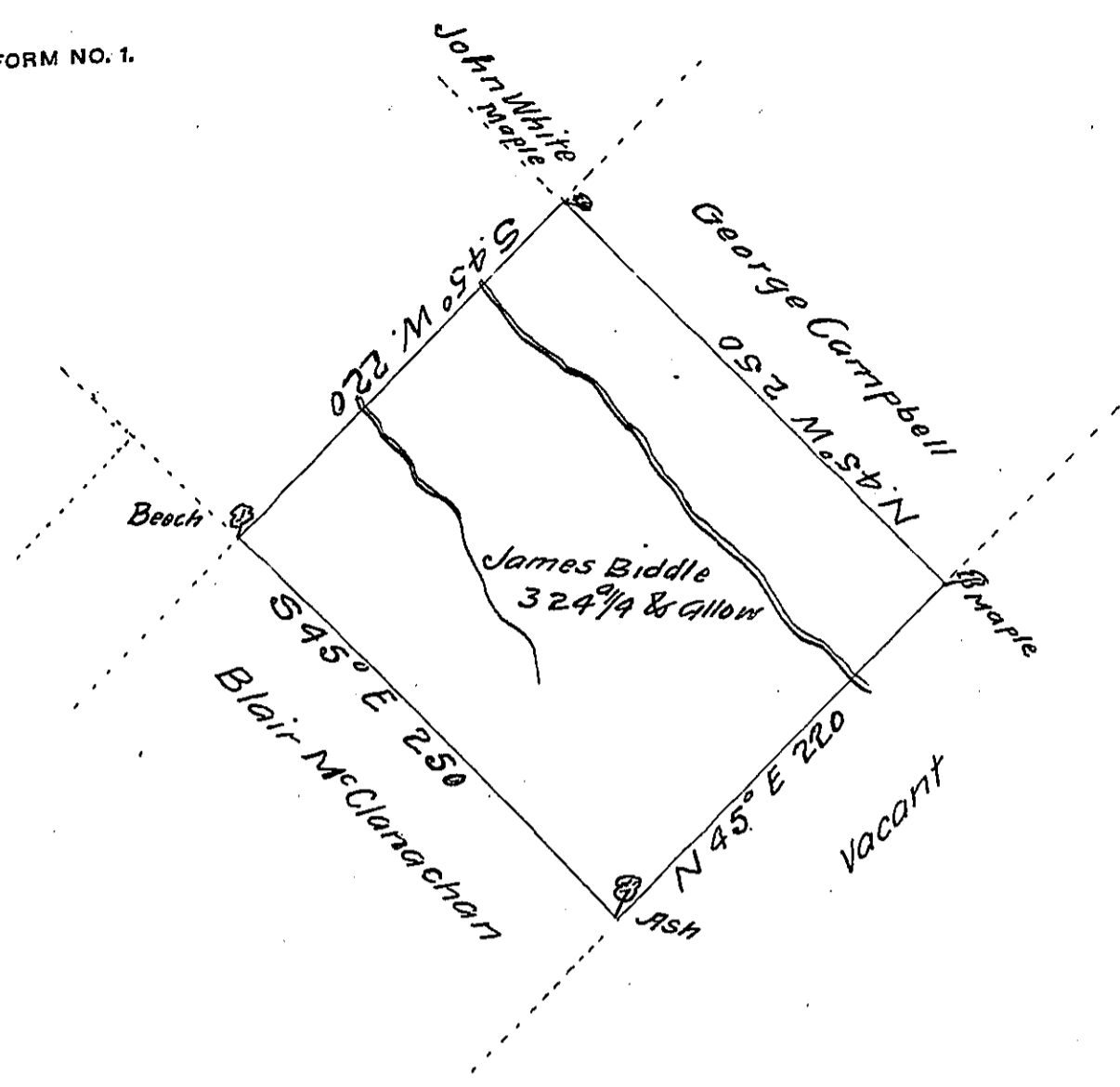


FORM NO. 1.



A Draught of a tract of Land called _____ situate on the Waters
of Tunkhannock adjoining land surveyed to Blair McClanachan and
others in the County of Northumberland containing Three hundred
and twenty four acres and a quarter of an acre besides the usual
allowance of 6 p. cent for Roads & ta.
Surveyed the 16th day of August 1774 unto James Biddle in pur-
suance of a warrant dated the 12th day of July 1774.
by Cha^s Stewart D^y Sur.
To John Lukens Esq^r Survey^r Gen^l.

IN TESTIMONY that the above is a copy of the original remaining on file in
the Department of Internal Affairs of Pennsylvania, made
conformably to an Act of Assembly approved the 16th day of
February, 1833, I have hereunto set my Hand and caused
the Seal of said Department to be affixed at Harrisburg,
this Twenty ninth day of August 1911

Henry Houck

Secretary of Internal Affairs.